

**SEASONAL MONITORING
PROGRAM
DISMANTLE REPORT
161010 IDAHO FALLS, IDAHO**

February 1996



**NICHOLS
CONSULTING
ENGINEERS, Chtd.**

1885 S. Arlington Ave., Suite 111, Reno, Nevada 89509 Tel (702) 329-4955 Fax (702) 329-5098



MEMORANDUM

TO: Aramis Lopez, Jr.
FROM: Long-Term Pavement Performance Division
DATE: Mark A. Potter and Douglas J. Frith
SUBJECT: February 23, 1996
Suspension of SMP Site Monitoring Activities, Site 161010

This memo will serve as the SMP Site Monitoring Suspension Status Report for Site 161010 (16SB) near Idaho Falls, Idaho.

This site was last monitored on May 22, 1995. The following monitoring activities were performed:

- FWD testing
- Transverse Dipstick measurements
- Manual Distress surveys
- Elevation surveys
- Water Table measurements
- Automated mobile data measurements (TDR and Resistivity)
- Manual electrical resistivity measurements (two and four point)
- Onsite data collection

Longitudinal profile data was collected on May 17 1995, using the K.J. Law Profilometer.

After monitoring activities were completed, the following closeout activities were performed:

- All TDR sensor cables were inspected, relabeled and scotch tape wrapped around the labels to help keep them in place.
- The Observation Well cap threads were cleaned, lubricant applied and then the Well was sealed.
- The Instrumentation Hole and trench was sealed with silicone sealant. See attached photographs.
- Nails were installed and sprayed with white paint at each FWD and rod and level testing location.

Aramis Lopez, Jr.
February 23, 1996
Page Two

- The air and rain gauge instruments were removed from the pole, the pole was taken down and a cap was put on the pole stub.
- The Panel Board containing the CR10, terminal strip and relay were removed.
- Electronics corrosion compound was applied to all TDR, BNC and MRC cable connections. The cables were then put in a plastic bag, taped closed and tied up inside the top of the box.
- Graphite lubricant was put in the lock and the lock was taped up to help keep out the elements of weather.
- The electronics box was checked to make sure the drainage was adequate.
- A layout schematic was drawn up so that the site could be re-established by someone not familiar with the site location.

The Instrumentation Hole location is at Station 5+20 within the wheelpath. The Cable Box is 25 feet from the edge of the travel lane and the pole is 2 feet behind the cable box. The Observation Well is located at Station 4+00, 10 feet from the edge of the travel lane. Please refer to the attached layout for further description of the actual monitoring locations.

Please find the following attached:

- Summary table of SMP measurements over preceding monitoring cycle following the standard format.
- Site layout schematic with location dimensions and all monitoring locations.
- Color copies of site photographs taken during the suspension activities.

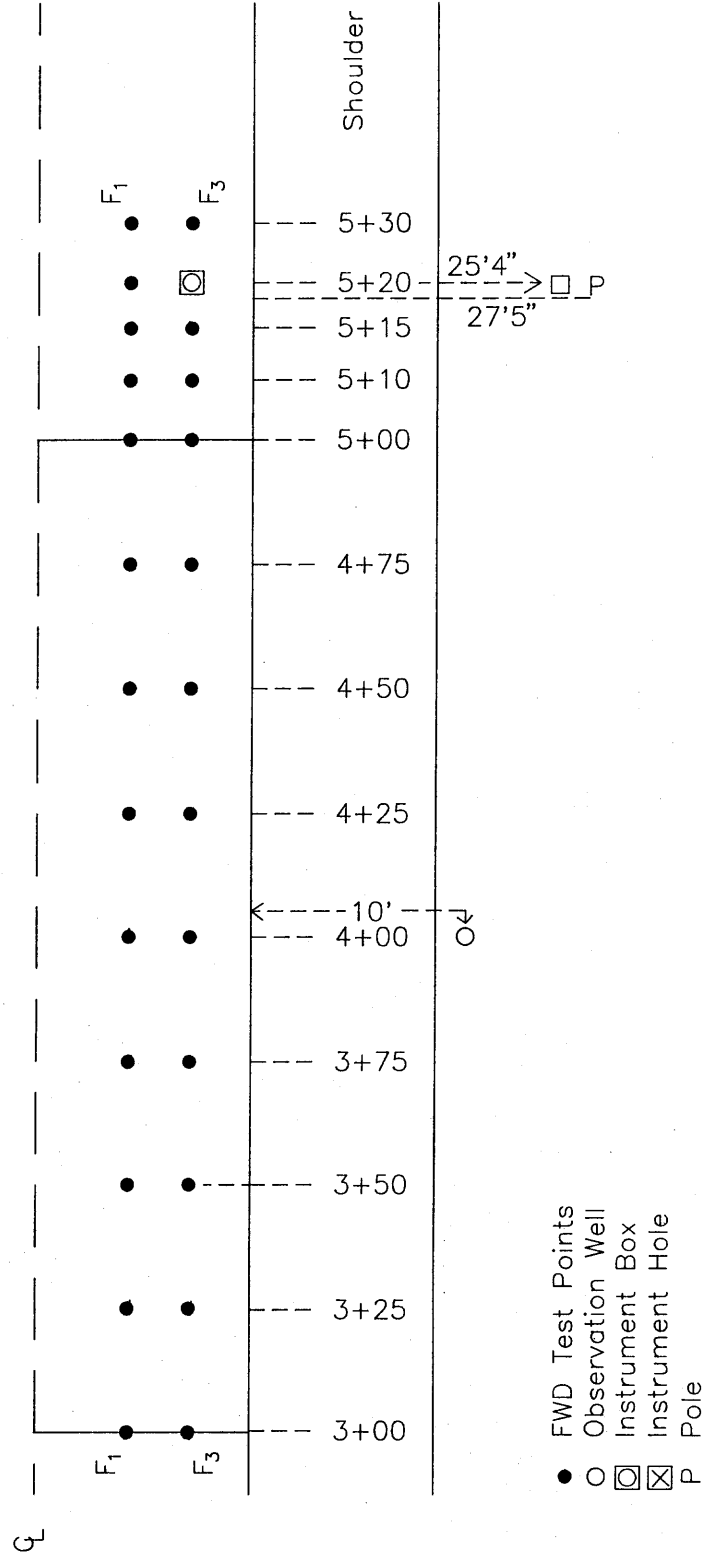
We trust this report provides you with the complete information required for this Seasonal Site Dis-Mantle. If you have any questions, please do not hesitate to call.

MP:DF/rkp
Attachments

cc: Gonzalo Rada
Cal Berge

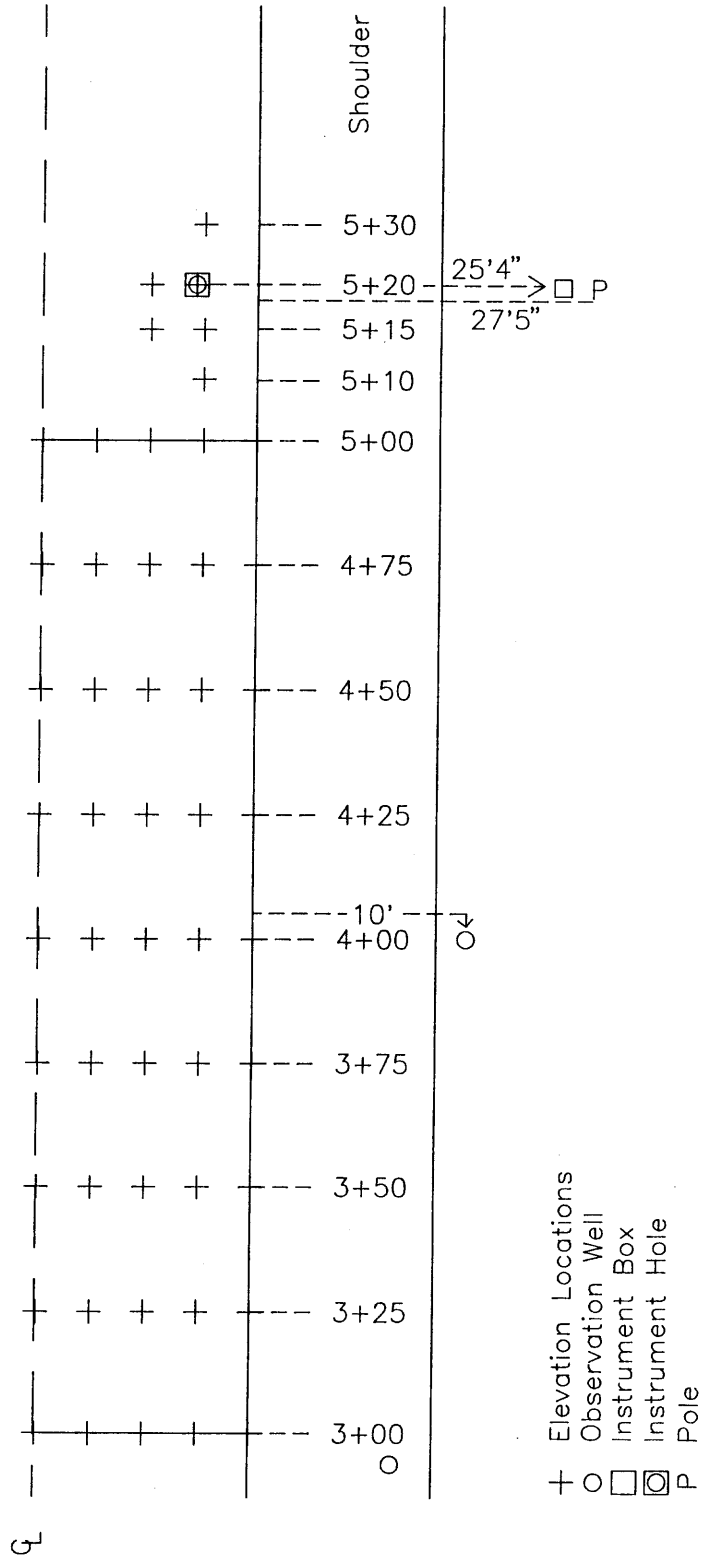
SECTION 161010
 IDAHO FALLS, ID I-15
 M.P. 132.00 GPS-1

SOUTHBOUND



SECTION 161010
 IDAHO FALLS, ID I-15
 M.P. 132.00 GPS-1

SOUTHBOUND

Idaho Seasonal Site 161010

14-Feb-96

SHRP ID	Date	Pass	TDR	Res	2 PT	4 PT	WT	Elev	Dist	Dip	OWP	ML	Temp
161010	10/1/93	A	Yes	Yes	Yes	Yes	No	Yes	No	No	4	4	Yes
161010	10/22/93		Yes	Yes	Yes	Yes	Yes	No	No	No			No
161010	11/18/93	B	Yes	Yes	No	No	No	No	No	No	1	1	No
161010	12/16/93	C	Yes	Yes	Yes	Yes	Yes	Yes	Yes	Yes	4	4	Yes
161010	1/27/94		Yes	Yes	Yes	Yes	No	Yes	No	No		1	Yes
161010	2/25/94	B	No	No	No	No	No	No	No	No	4	4	Yes
161010	3/21/94	C	Yes	Yes	Yes	Yes	Yes	Yes	Yes	Yes	4	4	Yes
161010	4/4/94		Yes	Yes	Yes	Yes	Yes	No	Yes	No	4	4	Yes
161010	4/22/94	E	Yes	Yes	Yes	Yes	Yes	Yes	Yes	No	4	4	Yes
161010	5/9/94	F	Yes	Yes	Yes	Yes	No	Yes	No	Yes	3	3	Yes
161010	6/1/94	G	No	No	No	No	No	No	No	No	4	4	Yes
161010	7/27/94	H	Yes	Yes	Yes	Yes	Yes	No	No	No	4	4	Yes
161010	8/25/94	I	Yes	Yes	Yes	Yes	Yes	Yes	Yes	Yes	3	3	Yes
161010	9/27/94	J	Yes	Yes	Yes	Yes	Yes	No	No	No	4	4	Yes
161010	11/2/94	K	Yes	Yes	Yes	Yes	Yes	Yes	Yes	Yes	2	2	Yes
161010	11/17/94	L	Yes	Yes	Yes	Yes	Yes	No	No	No	3	3	Yes
161010	12/13/94	M	No	No	Yes	Yes	Yes	No	No	No	3	3	Yes

SHRP ID	Date	Pass	TDR	Res	2 PT	4 PT	WT	Elev	Dist	Dip	OWP	ML	Temp
161010	1/25/95	A	Yes	Yes	Yes	Yes	Yes	Yes	No	No	2	2	Yes
161010	2/21/95	B	Yes	Yes	Yes	Yes	Yes	Yes	Yes	Yes	2	2	Yes
161010	3/9/95	C	Yes	Yes	Yes	Yes	Yes	No	No	No	4	4	Yes
161010	3/27/95	D	Yes	Yes	Yes	Yes	Yes	No	No	No	4	4	Yes
161010	4/12/95	E	Yes	Yes	Yes	Yes	Yes	No	No	No	4	5	Yes
161010	5/1/95	F	Yes	Yes	Yes	Yes	Yes	Yes	No	No	2	2	Yes
161010	5/22/95	G	Yes	Yes	Yes	Yes	Yes	Yes	Yes	Yes	2	2	Yes

SITE PHOTOGRAPHS 161010

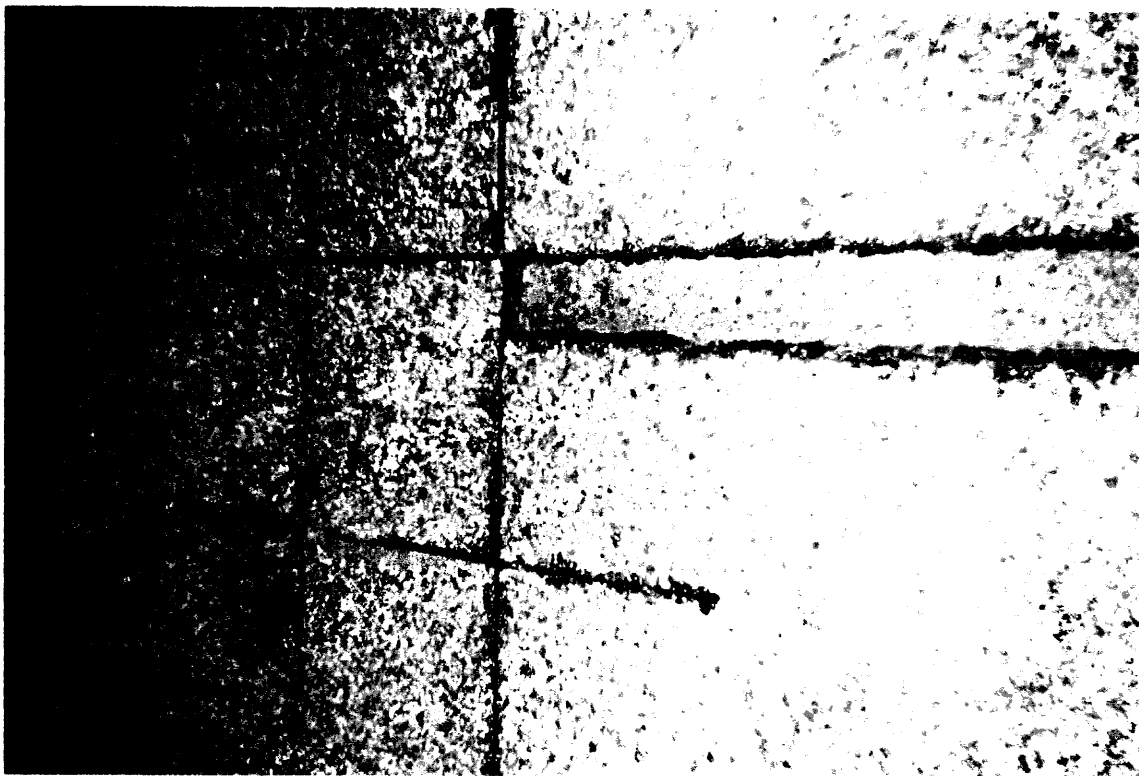


INSTRUMENT CABINET, POLE ALREADY REMOVED



FWD TESTING LOCATIONS STATIONS (5+10, 5+15, 5+20, 5+30)

SITE PHOTOGRAPHS 161010



INSTRUMENTATION HOLE AND TRENCH FEBRUARY 1995



INSTRUMENTATION HOLE AND TRENCH APRIL 1995